

Diesel pump 100 l/min

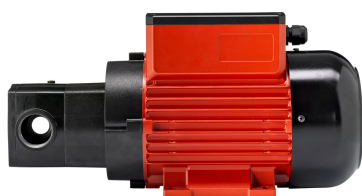
230 V-1~AC-50 Hz-EUS



Item number: 23 433
EAN: 4048358234339

Technical data

Connecting cable, length (m):	2
Connection suction side:	G 1" female
Connection discharge side:	G 1" female
Hydraulic data	
Pump design:	vane pump, selfpriming
Delivery rate under free discharge (l/min):	100
Discharge pressure up to (bar):	2,2
Suction height (m):	5
Pumping media:	fuel oil and diesel
Motor data	
Insulation class:	F
Highest permissible limit temperature (°C):	155
Voltage (V):	230
Frequency (Hz):	50
Power consumption (A):	5,7
Power (kW):	1,2
Thermal protection:	self resetting
Duty cycle (min):	Continuous operation – a real endurance runner
Torque (Nm):	4,1
Rotation speed (rpm):	1400
Type of construction:	IMB 3
Safety class:	IP54
Materials of parts in contact with liquid	
Seals:	FKM (Viton®)/NBR
Pump housing:	AlSi 12 (sea water resistant)
Rotor:	GG 25
Vane:	POM
Dimensions LxWxH (mm):	320 x 135 x 190
Weight (kg):	10,08



Specification

- Vane pump, with integral bypass
- On/Off switch
- Siphon protection acc. to WHG (German government regulation for environmental care), continuously active
- Installation of flowmeter NUMERlxx³, three digits, is possible (23 192)

Special notes

- First class construction of electric machines and pumps
- Designed for a long service life
- Encapsulation of the electric motor, which, in case of extreme temperature fluctuations, largely prevents the formation of condensed water and of short-circuits resulting thereof
- Motor and switch case made of shock resistant, die-cast aluminium
- Continuous operation – a real endurance runner
- Suction height 5 m
- Small tolerances provide a high suction- and pressure performance
- Pump case freely positionable in all 90° positions



Packaging

Dimensions LxWxH (mm): 338 x 200 x 196
 Weight including package (kg): 10,68

Packing unit:

1,0

